


“How to Export/Import SAFARI Montage Playlists


This allows users to ‘backup’ their playlists in case they change schools as well as allowing them to share with other SAFARI users. (You can even share playlists with friends in other states that are SAFARI users!) You are NOT moving video files, just the playlist .mpls file. These files are small enough to even email.

Export a Playlist

Playlists can be exported from either the ‘My Playlist’ list view or from the Playlist details view. To export a Playlist, perform the following:

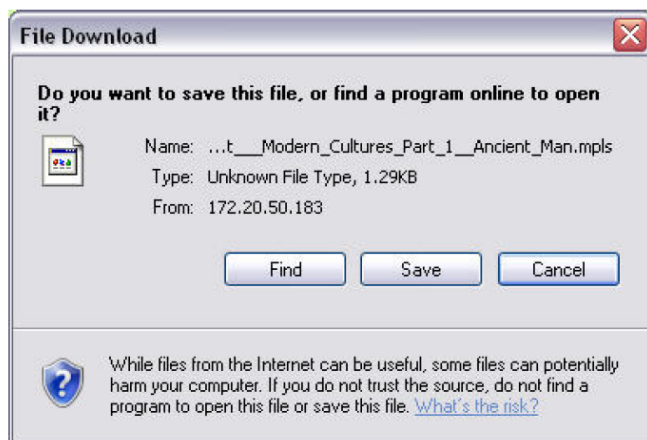
Click ‘Playlist’ () in the SAFARI Montage header.

Locate the Playlist to be exported.

Click the ‘Export’ () icon to the right of the Playlist title.



Click the ‘Save’.



Determine where you want to save playlists (jumpdrive, desktop, etc).

- It is suggested that a designated folder be created for playlist exports.
- This will aid in finding your playlist for importing at a later time.

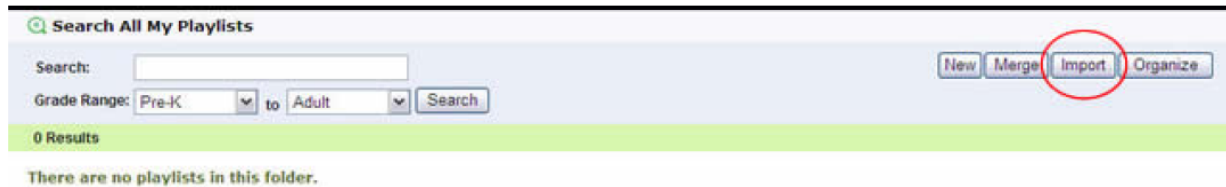
Click the “Save” and then choose the location where to save the playlist and a file name. Click “Save” again.

Note: Exported playlists are saved with the **.MPLS** file extension. *(You are not saving the video file, only the playlist.)*

Import a Playlist

Click 'Playlists' in the SAFARI Montage header. 

Click the 'Import' button.

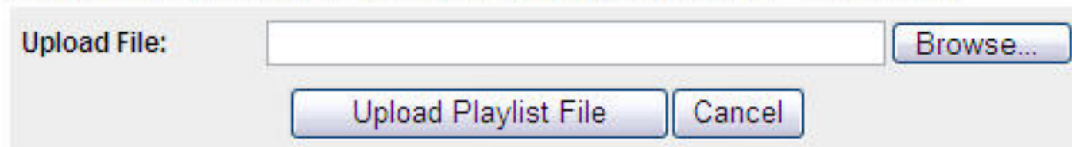


Click the 'Browse' button.

Select the SAFARI Montage playlist file to import.


Playlist File Upload

Import a SAFARI Montage Playlist file by clicking the "Browse..." button below.



Locate the file to be imported (.mpls) and click 'OK'.

Click 'Upload Playlist File'.

After the import is complete, the user will be taken to the Playlist details view. By clicking the 'Edit' () icon, the user can edit the playlist information, just as if they were creating a new playlist. **Note:** Playlist Titles cannot have the same name.